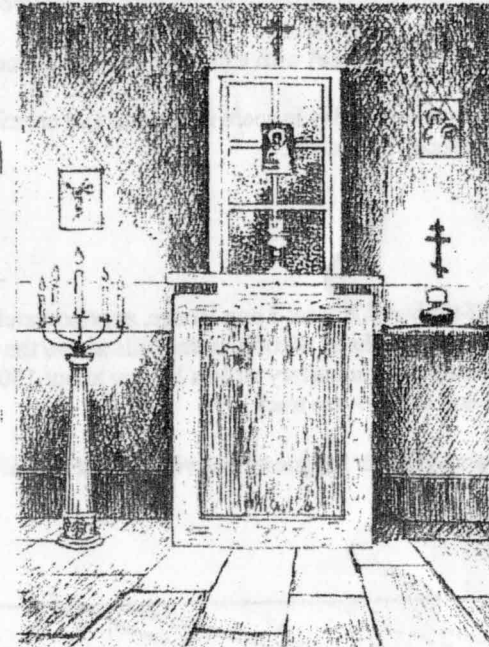
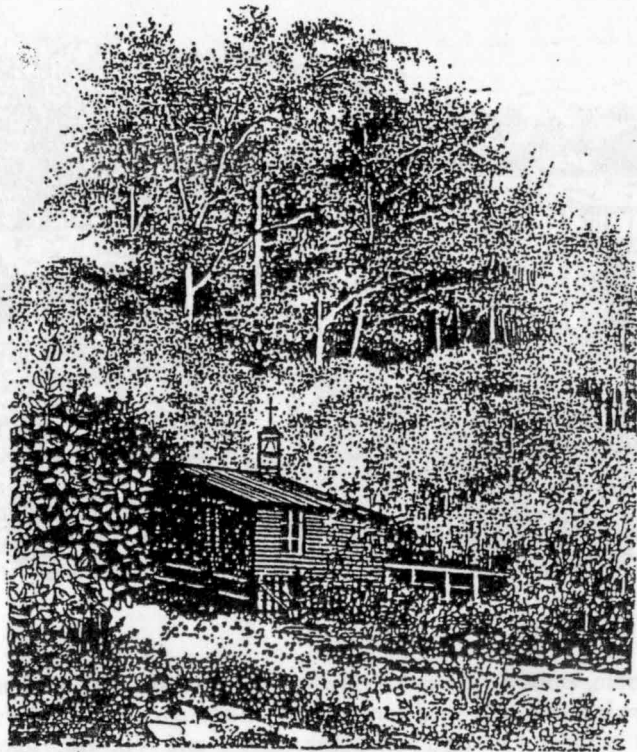


# Monastery of St. Barnabas the Encourager



Brynmaur Chapel



Resident Anchorite  
Father Bryan Scrivener

Chaplains:  
Rev. Nicholas Monk  
Rev. Leonard Parry- Jones

Bishop:  
Rt.Rev'd. Simon Barrington Ward

Acting Wardens  
Fr. Bryan & Dorothy Scrivener

Telephone Numbers  
01686 630 575  
07891 633 487

[www.saintbarnabas.co.uk](http://www.saintbarnabas.co.uk)

The Monastery of St Barnabas the Encourager evolved in 1994 from a 'House of Hospitality' at Lower Brynmaur which came into being in 1979. This retreat house primarily served the students and friends of the Multi-Denominational Centre for Black & White Christian Partnership at Selly Oak College in Birmingham.

The Monastery continues to provide a place of nurture and encouragement for all people from every Christian tradition and none, who are seeking a closer walk with God, and are looking for direction in the Christian life.

The prime work of a monastery is to be a place of prayer and intercession, and to be a place of hospitality and support for all who come.

The monastery at Brynmaur evolved in the Orthodox tradition with the encouragement of the late Father Barnabas of St Elias Monastery at New Mills, but being in the Anglican Communion, we might be described as Anglo-Orthodox. However most of our guests and visitors are from the Pentecostal and Free Church traditions.

The rhythm of the house revolves around four services a day, which are said in the very small chapel. Our services have been developed from the 1662 Anglican Prayer Book and are readily understandable to visitors of every tradition.

The services are:-

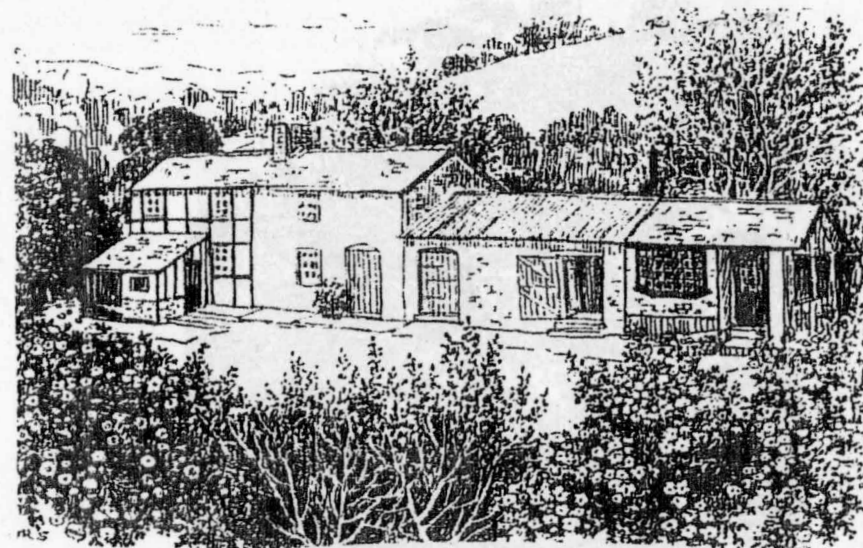
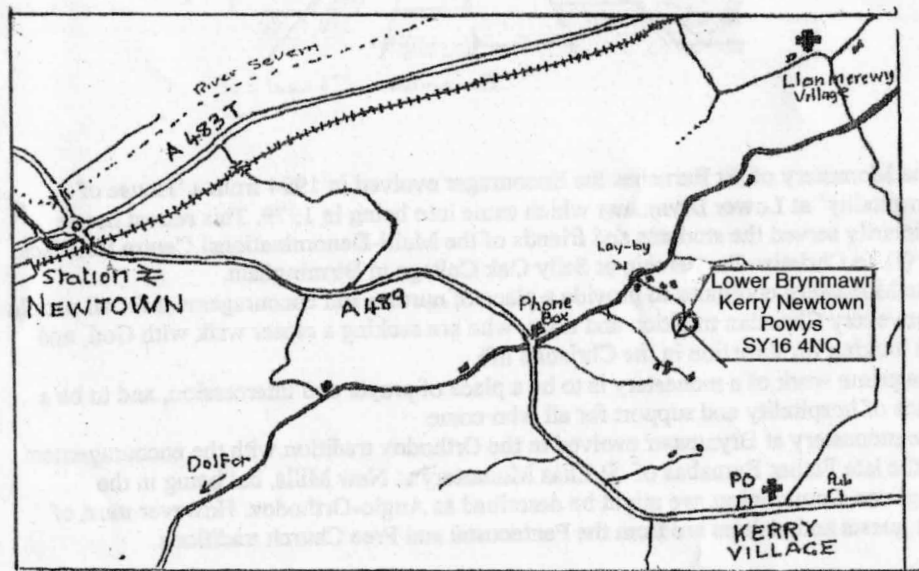
- 8.0.am. Morning Service with a hymn, scripture readings and prayers.
- 12.30.pm. Midday is in the form of a silent vigil with a closing prayer.
- 5.00.pm. Evening Service with scripture readings, prayers and intercessions for the persecuted church and other needs.
- 9.30.pm. End of day service (Compline) with a hymn, reading and meditation.

In between the services the monastery day is spent in manual and creative work, reading, private prayer and receiving guests.

### HOW TO FIND US

Lower Brynmawr is a half-timbered Border Long House, approximately 275 years old, situated 3 miles from Newtown Railway Station, in the hills above the town in the direction of Kerry. The house and monastery sit in a hollow about 150 yards from the road, across a field at the end of a private track.

The monastery is nearly always open for guests and visitors but it is advisable to telephone before visiting.



### FACILITIES:

There is a guest room, ensuite, with two single beds, shower/WC and washbasin. Kitchenette. There is also a converted barn/chalet. Although the barn offers simple accommodation it includes a sitting area, kitchen, shower and WC. Both guest facilities have their own entrance. In the reception area/sitting room in the main house there is a library. At the end of the building there is a fully equipped self-catering kitchen. There are two huts in the garden which are used as retreat cells. For these and visitors there is an outside toilet with washing facilities.

### Donations:

Please make cheques payable to:- Saint Barnabas Account.

*Let all guests that come be received like Christ, for he will say "I was a stranger and you took me in" and let fitting honour be shown to all, but especially pilgrims.....and first of all let them pray together"*

*Chapter 53. Rule of St. Benedict.*

*"Come aside to a deserted place and rest awhile"*

*Mark 6:31. NKJ.*

*"With the monks of St. Macarius, hospitality is a way that involves receiving others as lively images of God and as possible messengers, regardless of whether they are believers or not"*

*Dean Alan Jones, Grace Cathedral, San Francisco*